

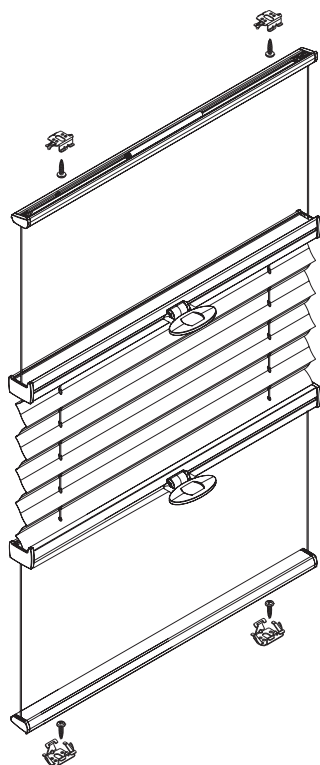
Installation TopFix / RecessFix [R1]

Luxaflex
Model
3202T

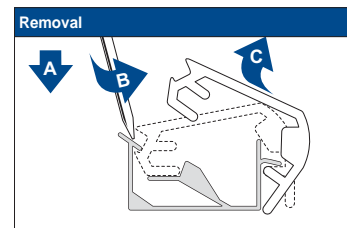
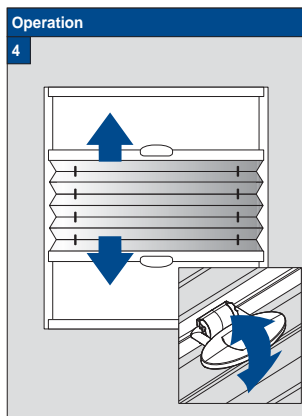
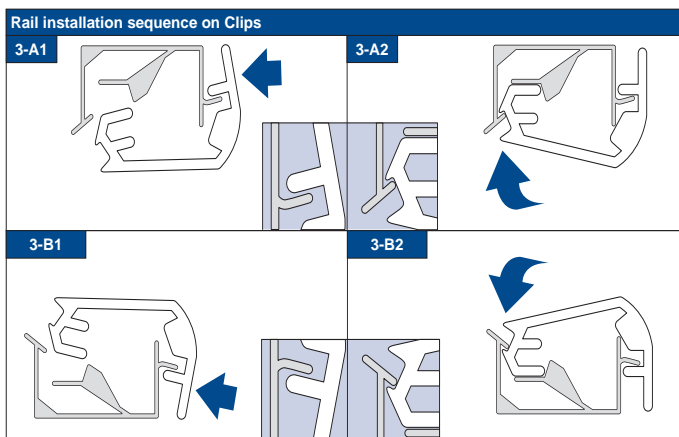
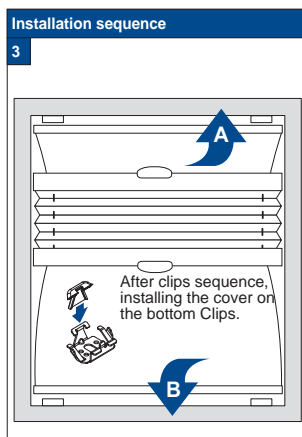
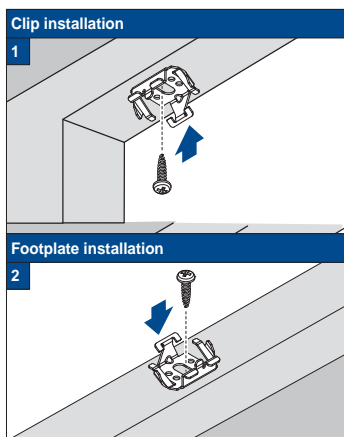
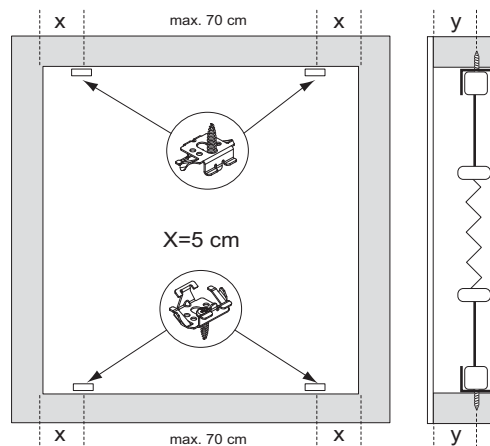
Do not damage the product when using a sharp knife to open the packaging! Fitting screws: Use a size-2 screwdriver (PO-ZIDRIVE) or use an electric screwdriver at it's lowest torque. use the original screws enclosed, to prevent malfunctioning from using too thick screw heads!

Rail removal: Use a flat screwdriver of max. 6 mm wide. Only

Installation and User's manual PB - GB



Product width	Number of parts		
0 - 80 cm	4	4	4
81 - 150 cm	6	6	6



21-03-2014

FaceFix installation to a window frame / wall [F1]

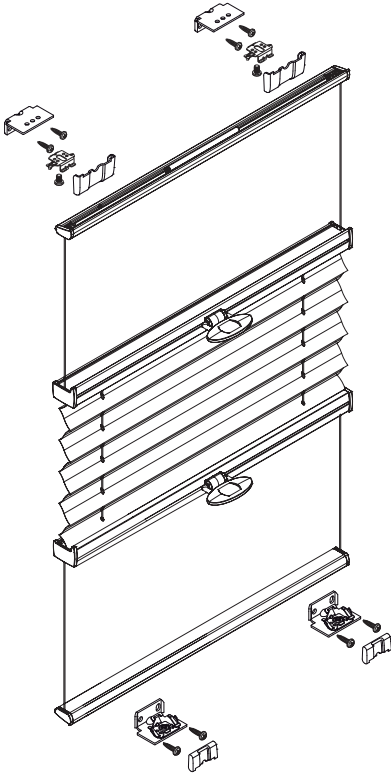


**Model
3202T**

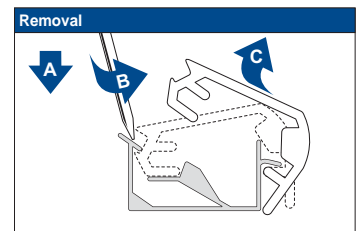
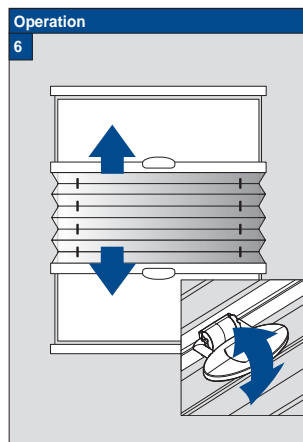
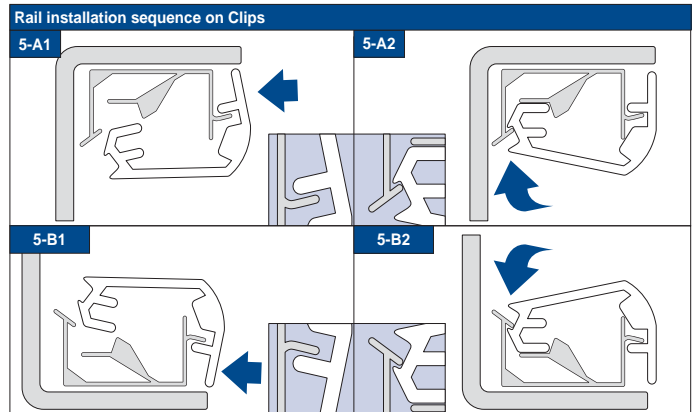
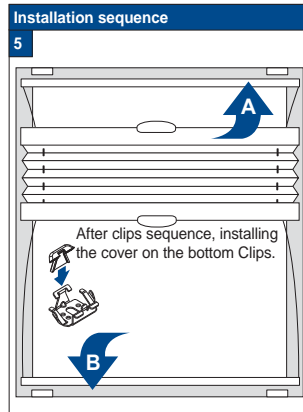
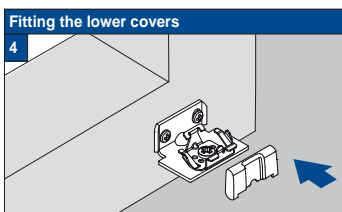
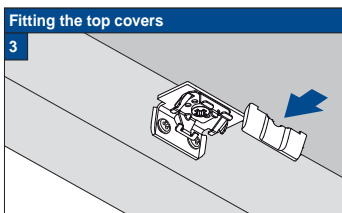
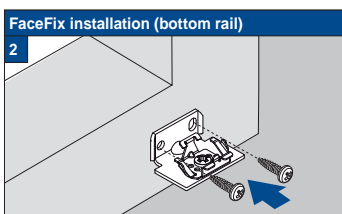
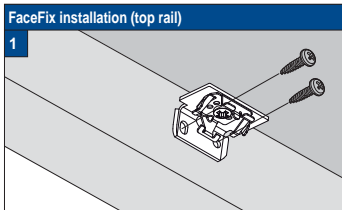
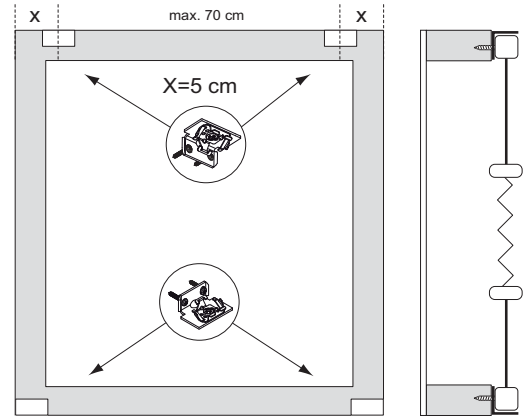
- Do not damage the product when using a sharp knife to open the packaging! Fitting screws: Use a size-2 screwdriver (PO-ZIDRIVE) or use an electric screwdriver at it's lowest torque.
- Rail removal: Use a flat screwdriver of max. 6 mm wide. Only

use the original screws enclosed, to prevent malfunctioning from using too thick screw heads!

Installation and User's manual PB - GB



Product width	Number of parts					
0 - 80 cm	4	4	4	4	8	4
81 - 150 cm	6	6	6	6	12	6



02-10-2015