

Installation TopFix / RecessFix [R1]

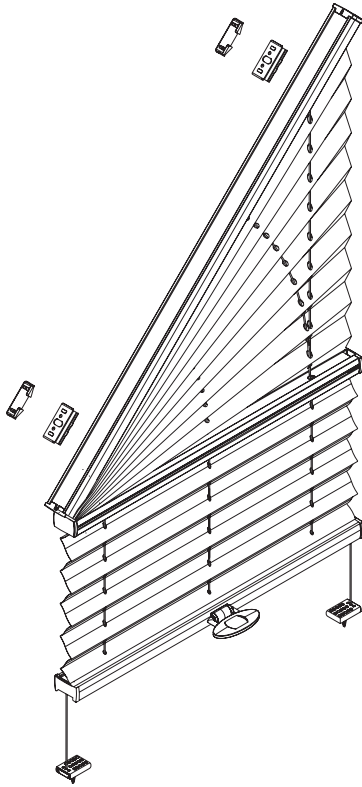


Model
3402

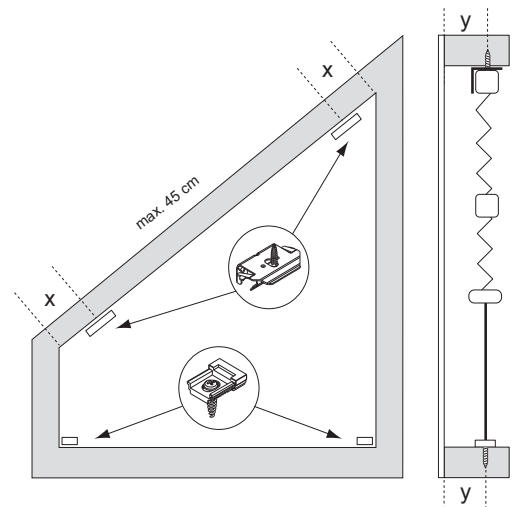
! Do not damage the product when using a sharp knife to open the packaging! Fitting screws: Use a size-2 screwdriver (POZIDRIVE) or use an electric screwdriver at it's lowest torque.
● Rail removal: Use a flat screwdriver of max. 6 mm wide. Only

use the original screws enclosed, to prevent malfunctioning from using too thick screw heads!

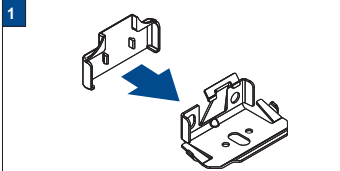
Installation and User's manual PB - GB



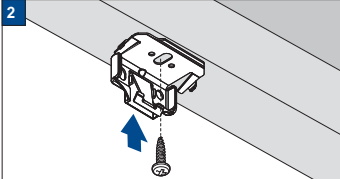
Product width	Number of parts			
0 - 150 cm				
	var	var	2	var



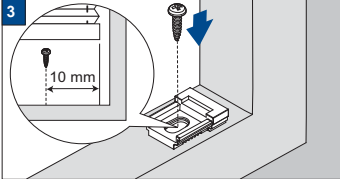
Cover installation



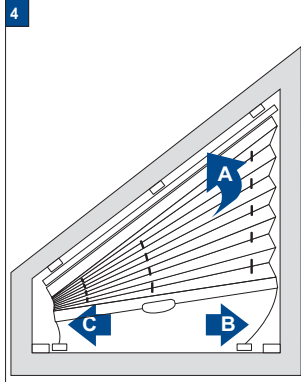
Clip installation



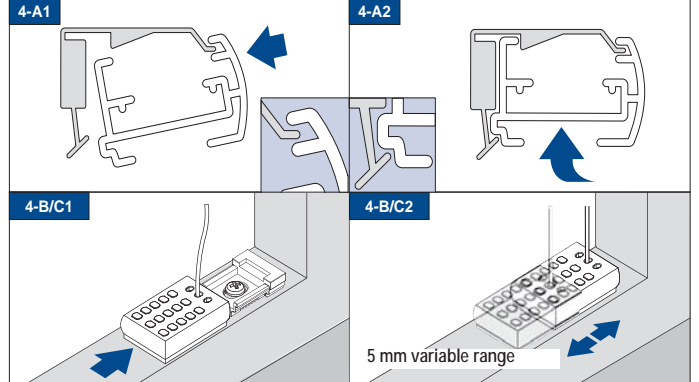
Footplate installation



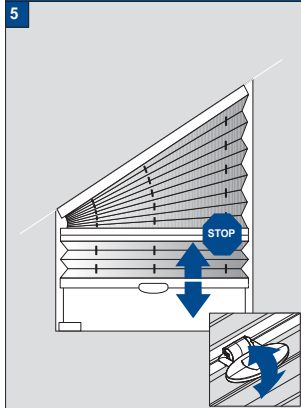
Installation sequence



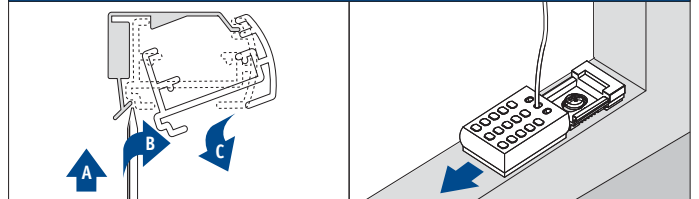
Rail installation sequence on Clips



Operation



Removal



21-03-2014

FaceFix installation to a window frame / wall [F1]

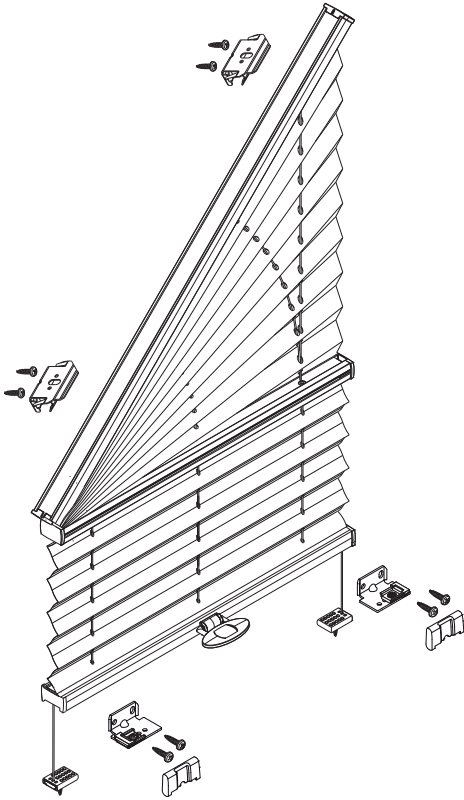


Model
3402

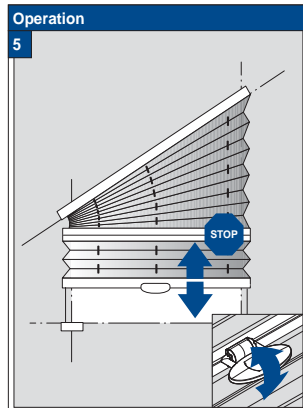
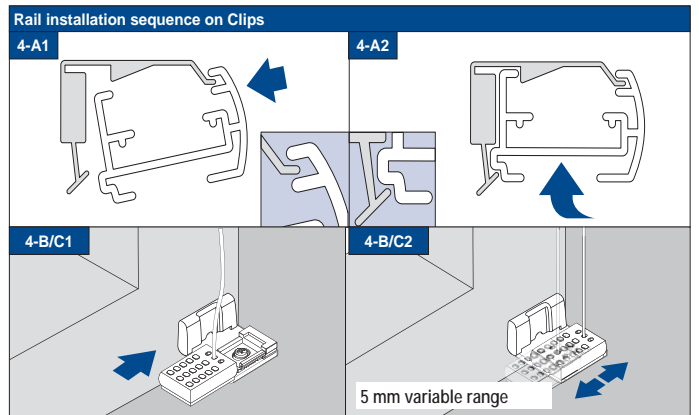
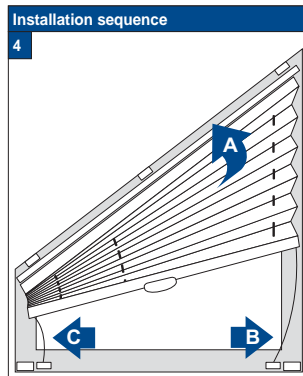
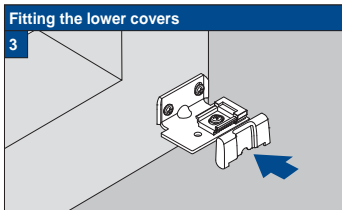
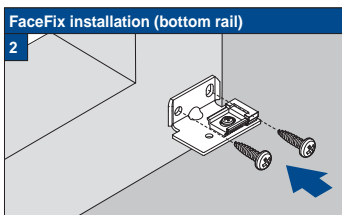
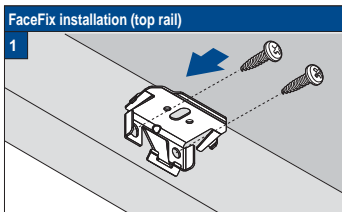
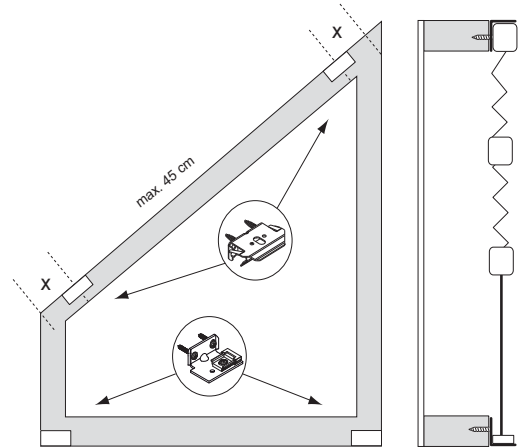
- Do not damage the product when using a sharp knife to open the packaging! Fitting screws: Use a size-2 screwdriver (PO-ZIDRIVE) or use an electric screwdriver at it's lowest torque.
- Rail removal: Use a flat screwdriver of max. 6 mm wide. Only

use the original screws enclosed, to prevent malfunctioning from using too thick screw heads!

Installation and User's manual PB - GB



Product width	Number of parts					
0 - 150 cm	var	2	2	2	var	2



02-10-2015